

THE TOLAD: SAYING FAREWELL ONE STEP AT A TIME

The walk with the TOLAD is a beautiful and extraordinary ritual in which your loved one's ashes are scattered gradually with respect, dignity and focused attention. The last walk offers everyone a chance to share memories, stories and grief. You can plan your walk however you want, and you are free to decide who goes along. Read this user guide carefully so you are well prepared for the last walk with your loved one. This user guide offers step-by-step instructions on how you can use the app to record your route and view it on the memorial page later.

If you have any more questions, please email us at: info@lucentt.co.nz

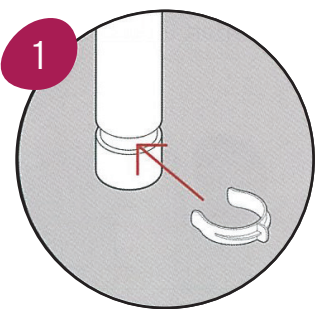
We sincerely hope you have a beautiful and memorable walk.

NOTES BEFORE YOU START

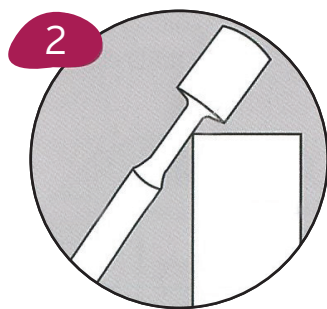
1. The TOLAD can hold up to 3.5 litres. In most cases, this will be enough capacity to hold any ashes.

2. The TOLAD is designed for use with fine ashes. Ashes that contain particulate larger than 6mm may cause it to malfunction. If the ashes are too coarse, they should be returned to the crematorium to be processed for scattering.
3. Once the TOLAD is filled, store it in a dry location.
4. While using the app, do not use any other applications on your phone, and do not minimise the app.
5. The TOLAD works best on a harder surface (like a path through a forest). Avoid walking through snow, mud, or wet clumpy sand. If you would like to walk on the beach, you need to stay on the harder part of the sand near the tideline. In the event that the TOLAD release mechanism does become obstructed during the walk, tap under the plastic mechanism to clear the opening.
6. After pressing the TOLAD into the ground about 600 times, the TOLAD will be empty and all the ashes will have been scattered. In practice, this means taking a walk for about 1 kilometer. You can extend the walk by pressing the TOLAD downward less frequently or pressing it more gently.
7. We would love to hear about your experiences with the TOLAD and related products. Feel free to share your stories with us via info@lucentt.co.nz

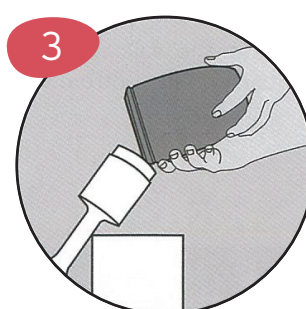
FILLING THE TOLAD



Check to make sure that the clip on the bottom of the TOLAD is fastened shut.



Lean the TOLAD diagonally against a stable object.



Remove the cap of the and fill the TOLAD directly from the urn, or use a funnel.



Place the TOLAD upright again to fill the rest of the ashes and replace the cap.

For enquiries and orders please contact us.

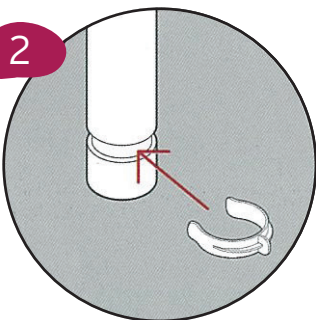
WALKING WITH THE TOLAD

1

Choose your location and route with care.

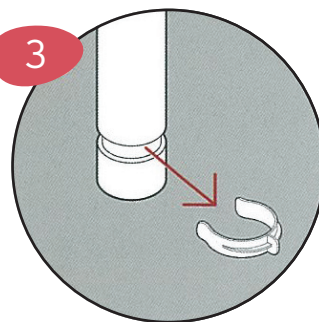
Check with the owner of the land to arrange permission to scatter ashes there.

2



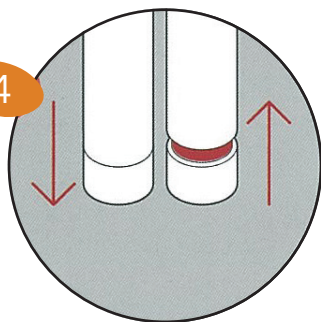
When transporting the TOLAD, make sure that the bottom is tightly closed with the plastic clip that comes with it, so the TOLAD does not lose any ashes on your way to the location.

3



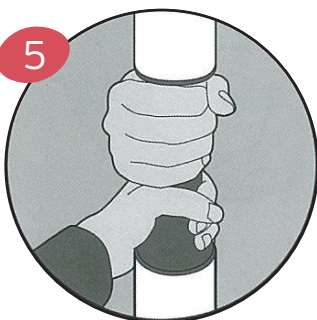
Before you start scattering the ashes, remove the plastic clip from the bottom of the TOLAD.

4



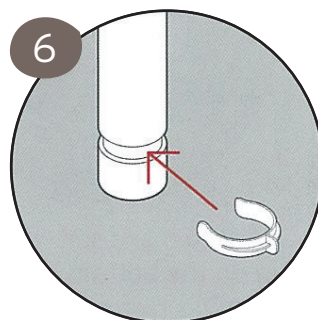
Hold the TOLAD upright with the bottom touching the ground, and press it down lightly to start scattering. Walking will take less physical effort if you hold the TOLAD close to your body.

5



If the TOLAD is too heavy at first, two people can hold it together. You can extend your walk for a longer distance by pressing the TOLAD on the ground less often, or less firmly.

6



After the walk, put the plastic clip back on the bottom of the TOLAD.

The TOLAD App is available in the App Store or Google Play Store.
Follow the instructions in the app.

Prefer seeing videos of the steps explained in the manual?

Scan the QR-code or visit tolad.net/manual



For enquiries and orders please contact us.